

SYSTEM BRAIN

CORPORATION

**Eco Creative
To bridge the future!**

GUIDANCE for NANO MAINTANANCE SB Series

Index

- *Actual Situation for Mold
- *Specs.For NANO MAINTENACE SB Series
- *Line up for NANO Detergent
- *Securing Safety and Trust
- *Comparison for installation
- *Ref.Photo(NANO M.SB55 for Mold Remove)
(NANO MSB66 for Stone/tile Clean)
(NANO MSB77 for wood Clean)
(NANO MSB88 for Oil Clean)
(NANO MSB99 for Multi-Purpose)
- *List of Users

SYSTEM BRAIN CORPORATION

Shinjuku Park Tower N30th Floor

3-7-1、Nishi-Shinjuku,Shinjuku-ku

Tokyo,163-1030 JAPAN

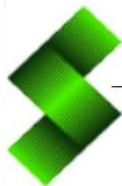
TEL 03-5326-3435 FAX 03-6800-7772

e-mail info@systembrain.cc

HP <http://www.systembrain.cc>



MILANO 2015



SYSTEM BRAIN
CORPORATION

Eco Creative
To bridge the future!

SB 55 (MOLD REMOVER)

MOLD REMOVE AND STERILIZATION FOR CONCRETE WALL

BEFORE



AFTER



MOLD REMOVE AND STERILIZATION FOR CEILING MATERIAL (GYPSUM)

BEFORE



AFTER



MOLD REMOVE AND STERILIZATION FOR WALLPAPER(CLOTH)

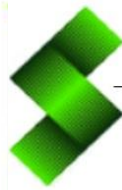
BEFORE



AFTER



NANO - MAINTANANCE SERIES
100% NATURAL
FROM JAPAN



SYSTEM BRAIN
 CORPORATION

Eco Creative
To bridge the future!

SB 66(FOR STONE STAIN)

RUST REMOVE, STERILIZATION AND WASH FOR BATHTUB

BEFORE



AFTER



SULFUR REMOVE, STERILIZATION AND WASH FOR GRANITE STONE

BEFORE

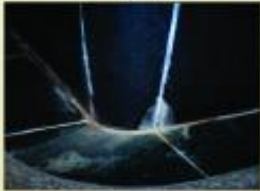


AFTER



CHALK REMOVE, STERILIZATION AND WASH FOR GRANITE STONE

BEFORE



AFTER



STERILIZATION AND WASH FOR POOL STERILIZATION ROW

BEFORE



AFTER



REMOVAL FOR CIRCULAR SPOT, STERILIZATION AND WASH FOR MIRROR

BEFORE



AFTER



REMOVAL FOR URINAL CALCULUS, STERILIZATION AND WASH FOR URINAL

BEFORE



AFTER



STAIN REMOVAL, STERILIZATION AND WASH FOR OUTER WALL OF TILES

BEFORE



AFTER



REMOVAL FOR CHALK/LYRE , STERILIZATION AND WASH FOR OUTER WALL OF TILE

BEFORE

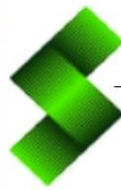


AFTER



ABOVE DEMO WAS DONE JUST USING OUR DETERGENT AND WASHED BY WATER WITHOUT USING BRUSH

NANO - MAINTANANCE SERIES
100% NATURAL
FROM JAPAN



SYSTEM BRAIN
CORPORATION

Eco Creative
To bridge the future!

SB 77 (FOR WOOD STAIN)

STERILIZATION AND WASH FOR WOODEN GATE

BEFORE



AFTER



MOLD REMOVE & STERILIZATION FOR PARAPET AND HANDRAIL

BEFORE



AFTER



MOLD REMOVE & STERILIZATION FOR CYPRESS BATHTUB

BEFORE

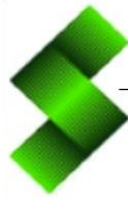


AFTER



ABOVE DEMO WAS DONE JUST USING OUR DETERGENT AND WASHED BY WATER WITHOUT USING BRUSH

NANO - MAINTANANCE SERIES
100% NATURAL
FROM JAPAN



SYSTEM BRAIN
CORPORATION

Eco Creative
To bridge the future!

SB 88(FOR OIL STAIN)

**OIL REMOVE, STERILIZATION AND CLEAN FOR
OUTDOOR UNITS**

BEFORE



AFTER



**OIL REMOVE, STERILIZATION AND CLEAN FOR DUCT
FOR VENTILATING FAN**

BEFORE



AFTER



**SCORCH REMOVE, STERILIZATION AND WASH
FOR FRYER**

BEFORE



AFTER



**OIL REMOVE, STERILIZATION AND WASH FOR
GREASE-FILTER**

BEFORE



AFTER



OIL REMOVE, STERILIZATION AND WASH FOR HOT STEEL PLATE

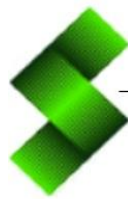
BEFORE



AFTER



NANO - MAINTANANCE SERIES
100% NATURAL
FROM JAPAN



SYSTEM BRAIN
CORPORATION

Eco Creative
To bridge the future!

SB 99(DETERGENT FOR GENERAL USE)

OIL REMOVE & STERILIZATION FOR RANGE COOKER

BEFORE



AFTER



STAIN REMOVE & STERILIZATION/WASH FOR OUTER WALL PANEL

BEFORE



AFTER

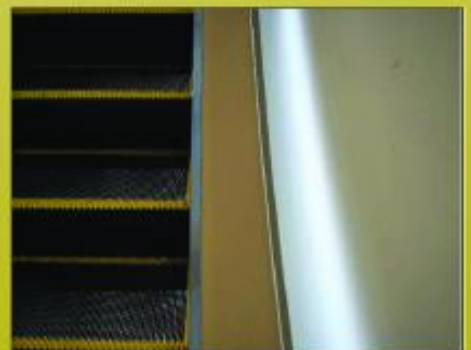


STERILIZATION/CLEAN FOR ESCALATOR BELT AT D'MENT STORE

BEFORE



AFTER



ABOVE DEMO WAS DONE JUST USING OUR DETERGENT AND WASHED BY WATER WITHOUT USING BRUSH



SYSTEM BRAIN
CORPORATION

Coating Business

Glass shield film is formed
By water and ceramic composites

•Without using any chemical coating technologies, utilizing only water and ceramic composites, Nano shine coating forms glass shield film for the various objects easily. (Patent pending).

The technology for Nano- Shine is developed originally as a new car body care coating skill, and the way of coating is different from the others.

•Once the tap water runs into Nano shine equipment which has ceramic complex inside, Ingredients of SiO_2 , (can be a composition of the membrane,) start to melt down.

The ingredients of SiO_2 with electronic charge soak into the car body in numerator level and forms strong glass shield film which is membrane of inorganic 100%.

After the Nano shine coating, which the slight thin glass shield films make your car shine like a brand new car as before.

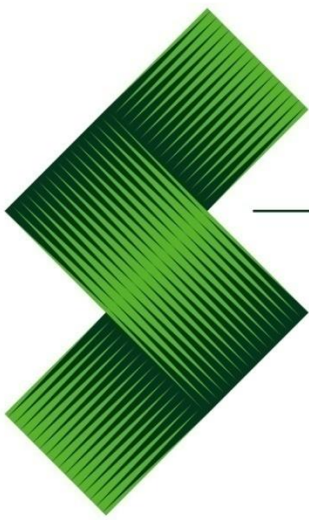
Washing your car normally and you can keep your car shine.

Also, we produced for the building maintenance coating by the Nano Technology which is called 'Nano Step'.

Efficient of our method for the building maintenance is what you can reduce the coat. So it will be popular among the building maintenance industry.

NANO SHINE
PROTECTED BY ERP TECHNOLOGY PRODUCED BY SYSTEM PARTNER CO.,LTD





SYSTEM BRAIN
CORPORATION



MILANO 2015

We exhibited
in EXPO2015

Corporate Information

Company Name : System Brain Co.,Ltd.

President : Tomokazu Kanda

Address 【Head Quarter】

Shinjuku Park Tower N30th Floor

3-7-1、Nishi-Shinjuku,Shinjuku-ku

Tokyo,163-1030 JAPAN

TEL 03-5326-3435 FAX 03-6800-7772

e-mail info@systembrain.cc

HP <http://www.systembrain.cc> info@systembrain.cc

<http://www.nano-shine.com>

【Technical Center】

2-32-8 Irumagawa, Sayama-shi,

Saitama 350-1305

TEL 04-2936-6040 FAX 04-2968-6807

Capital 30,000,000 yen

(Group gross capital : 70,000,000 yen)